

Referrals

For any additional information relating to the service you can contact **Sharon Mordlock on 0161 7979775**, or access Shardale's website www.shardalerehab.co.uk

If you are a resident of Lancashire you can self refer to Lancashire Social Services Central Hub on:

01282 425961



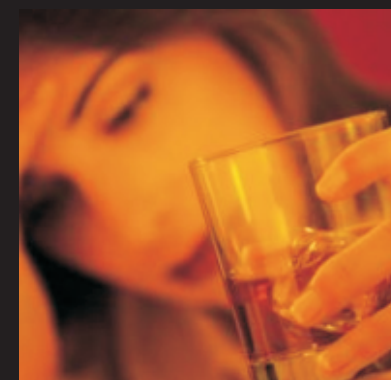
SHARDALE Ltd
Specialised Therapeutic Communities

WOOLFELD HOUSE • WASH LANE
BURY • LANCASHIRE • BL9 6BJ

Tel: 0161 797 9775 • Fax: 0161 763 7904
Email: enquiries@shardales.co.uk

SHARDALE Ltd
Specialised Therapeutic Communities

**Drug & Alcohol
Day Care Provision**



WOOLFELD HOUSE • WASH LANE
BURY • LANCASHIRE • BL9 6BJ

Tel: 0161 797 9775 • Fax: 0161 763 7904
Email: enquiries@shardales.co.uk

Shardale Drug & Alcohol Day Care Provision

Shardale is currently the largest independent provider of specialised residential alcohol treatment in the North West of England

Along side the residential component at Shardale there is an established structured day care service for up to 14 people

The service has been designed for any individual who wants to remain alcohol or drug free



The service may appeal to the following

- Individuals who have accessed other alcohol or drug services in the community and this hasn't been successful
- Individuals who want to move more towards recovery instead of just maintenance
- A personalised treatment programme that is an alternative to illness/disease based 12 step treatment
- An alternative to residential care but still as intensive
- Access to a thorough extensive programme without giving up your home
- Individuals who want to remain alcohol and drug free and actually start to change or better their life
- Individuals who want to learn how to actually enjoy being drug or alcohol free
- If your life is being adversely affected by either drugs or alcohol
- If you've had periods off the drink or drugs and are unable to enjoy life

Additional information

The service currently covers most of Lancashire and transport to and from the facility is provided each day.

A minibus will collect you from an agreed place in the morning along with taking you home in the afternoon.

A small lunch will be provided on site, treatment usually spans nine months, along with an additional six months of after care that takes place twice a week in Bury.

Funding

Lancashire county council currently purchases day care services from Shardale. Once a referral has been made your funding authority will complete a financial assessment to define if you will have to contribute towards your treatment.

Individuals can also purchase the service themselves if their funding authority isn't in a position to.